

Parent Orientation

Rhodes School Northshore Campus 2022-2023

Principal - Lakesha Winslow

Associate Principal- Sonya Akers



Introductions



Rhodes School for the Performing Arts

Humble Campus - Administration

Superintendent

Mrs. Ashley Miller



Principal

Mrs. Lakesha Winslow



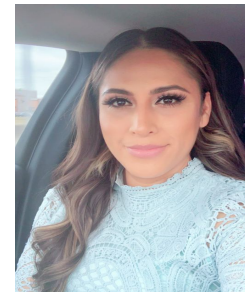
Associate Principal

Mrs. Sonya Akers



Counselor

Ms. Ludivinia Valdez
Lopez



Welcome



Title One

We are a Title 1 school.

The Federal Government provides financial assistance to schools with high percentages of children from low-income families to ensure that all children meet challenging state academic standards.

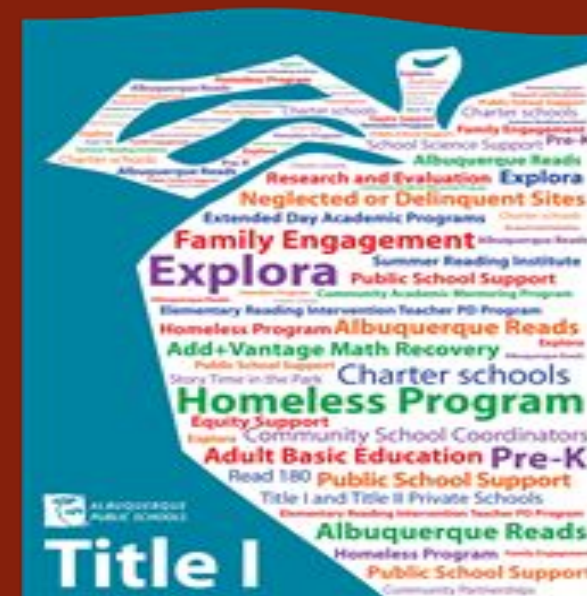
The funds are used to:

Hire Teachers

Purchase Supplies

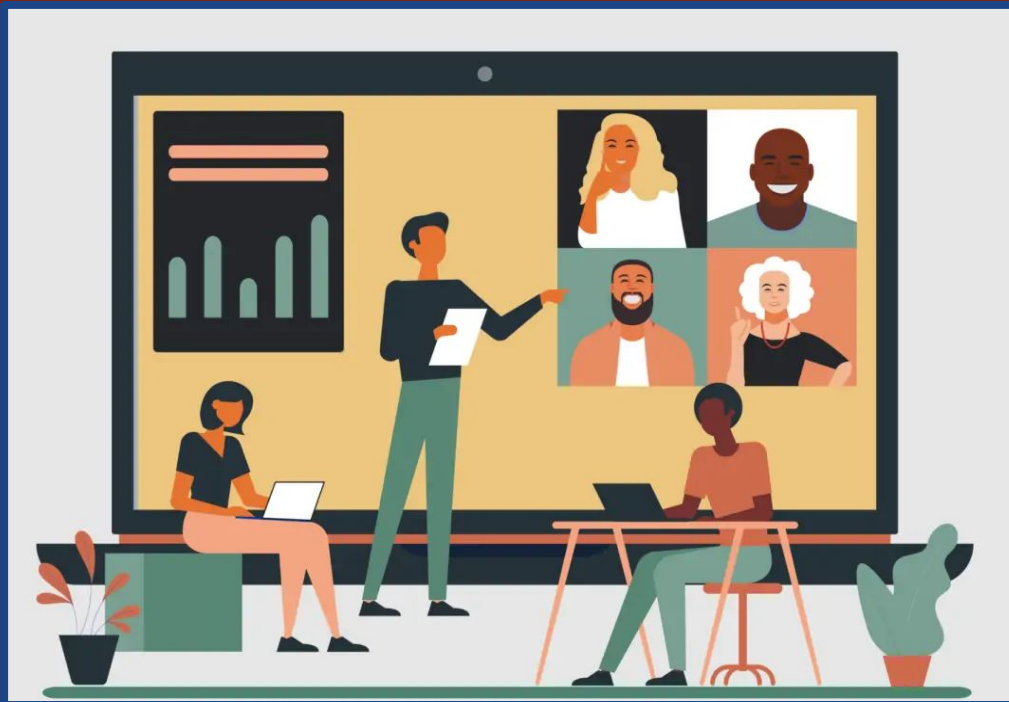
Professional Development

Educational Material



CREW

- The foundation upon which the school was founded...
- Centered around “community”



- Parents, students, teachers, and administrators
- Work collaboratively to accomplish goals
- ***NO One is allowed to just go along for the ride; you must be an active participant!***
- We are CREW, not passengers!

Communication

Monthly Parent Bulletins/Pow Wow with the Principal

- Monthly Parent Bulletins are sent via email through Constant Contact. Please ensure that your email is accurate in SchoolMint.
- Monthly Parent Bulletins can also be found on the website under the “News & Events” tab, just select your campus.
- Please contact Jennifer Gooden, Northshore Campus Secretary if you are not receiving the monthly bulletins via email.
- The second Tuesday of each month we have Pow Wow with the principal at 9am and 6pm via zoom.

Campus Website

Remind 101

Campus
@RSPANS

to 81010



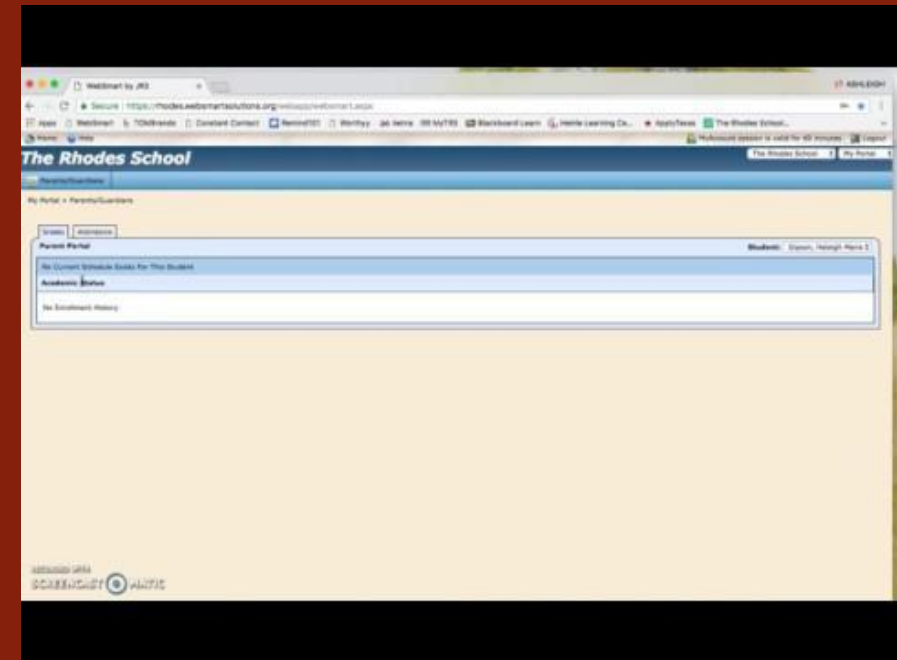
School Mint

- School Mint is used as a way to communicate with parents via email.
- Please ensure that your email address is accurate and be sure to select email & text as your preferred means to communication



Parent Portal

- How to access the student's grades
- New parents only – Request access to the portal by clicking the link below.
- Below is the link for parents to request access to parent portal.
- Parent Portal Access Request Form:
- <https://goo.gl/forms/XJg14c9UOZz8t36L2>
- Once your account is activated, you will receive an email with instructions.

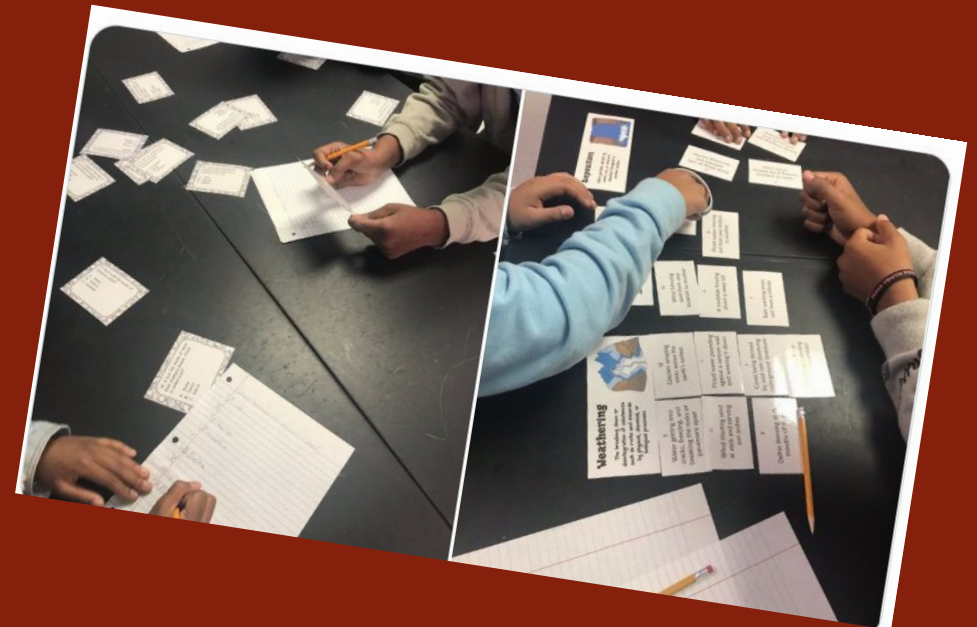
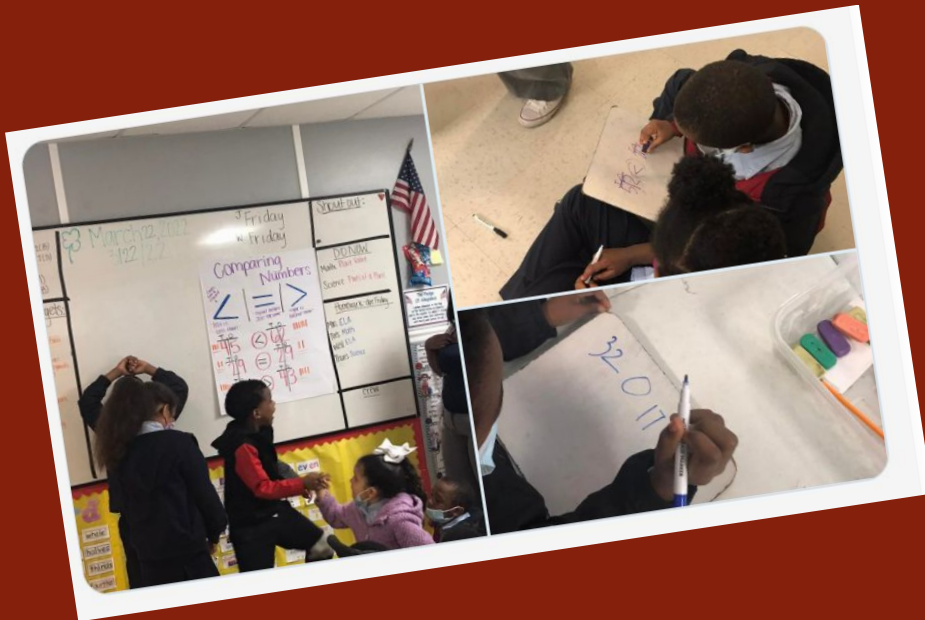


Grading

- Students will receive 2 grades a week from each subject area
- If you have any questions or concerns regarding your scholars grade please contact their teacher FIRST and then if you still have questions or concerns, contact Administration.
- Students will receive a progress reports at 3 weeks and a report card every 9 weeks.



What is my child learning?



Curriculum

- PK: Creative Curriculum
- K-5:
 - ELA-Amplify
 - Math-Eureka Math
 - Science-PhD Science
 - SS-SAVVAS
- 6th Grade:
 - ELA: Amplify
 - Math-Carnegie Learning
 - Science-SAVVAS
 - SS-SAVVAS



HB 4545



All students who attend a Texas, Open-enrollment charter school and meet the requirement for **accelerated instruction**, must receive it.

Requirements:

- Did not pass the STAAR test
- Are not on Grade Level
- RSPA has Accelerated Instruction embedded in the school day (ALT)
 - **3rd and 5th Grade only** will have three opportunities to pass Reading and Math STAAR this school year 2022-2023
 - The 3rd opportunity will be during summer school and **is required** if they are not successful on the 2nd administration.

Student Planners

- Student Planners are required for students in 3rd - 6th grade.
- Student planners are used to help students stay organized, take accountability for their daily assignments and homework. They also write down the daily agendas and important dates to remember.
- The cost to purchase a planner is \$5.00

SLEDS- Student Led Conference

- SLEDs- Time for your child to share what he/she is learning
- How to Sign-up:
 - Your child's teacher will send an invite via SignUp Genius
 - October/February

Special Population Services

If your child has a disability or requires an IEP, 504, or LEP services.

Contact the Office of Special Populations

281-458-4334 ext 112

Terrell Hutchinson- Director of Special Services



Attendance

98% is GREAT!

- There is a clear link between student attendance and student academic learning
- It is essential that children come to school every day and on time so they can make the best possible progress in their learning. Therefore, we have put Attendance high on our priority list this year....
- Our target goal is 98%
- Our motto this year is “98 is Great!”



Student Attendance

- Students can not have more than **18 absences** for the school year in accordance to the Texas Compulsory Attendance Law.
- Students with **more than** 18 absences (this includes tardies) will automatically have to attend summer school and they can't miss a day. This is called "seat time" to make up for the missed days during the school year.

Late Arrivals

- Students are late after 7:50 am
- Three tardies = 1 absence
- If a student is checked out before 9:45 am, or arrives to school after 9:45 am, he is counted absent for that day



Early Pick-up

In order to check your child out early:

- Parent/Guardian must have a valid Id (driver's license, passport, etc.)
- Must be listed on the “Pick-up List” in the system
- Cut-off time for Early Pick-up is 2:50 pm



1st Day of School



What to do & where to go on the 1st day

- The first day of school is a great way to start following routines and procedures
- School doors open at 7:15am
- Student drop off will be at the front of the building
- Parents are encouraged to give all hugs and kisses at the front door.
- Please make sure you have a car tag if needed.
- At 7:50 am parents must walk in and sign students in at the front desk.

Dismissal Procedures

- Students cannot be taken out of school (early dismissal) after 2:50
- Dismissal begins at 3:45
- Students can be picked up at the front of the building
 - If you do not have a Car Tag:
 - Park
 - Come to front office and sign your child out
 - must show ID
 - must be on Pick-up list
- Parents who are 30 minutes late must pick their child up from Crayon Club
- Crayon Club's drop-off fee is \$25



Uniforms



FRENCH
TOAST.

SCHOOLBOX

Uniform for Prek-5 Girls and Boys :

- Tops – Light blue **button down OXFORD SHIRT ONLY** with collar.(Long or short sleeve) **No Polo Style Shirt**
- Tie – Plaid Blue and White OR Plaid Blue and Gold
- **Bottoms for Boys** – Navy blue pants or shorts.
- **Bottoms for Girls** – Navy blue (khaki material) pants, capris, shorts, skirts, pleated skirts, or dresses (must be no more than two inches from the knee).
- Socks – White Knee Socks preferred
- Shoes – Shoes must be closed toe and must fully cover the feet. Students are also required to wear socks along with their shoes

Uniform for 6th Grade Girls and Boys:

- **Same as above expect for the following:**
- Tops – White button down OXFORD SHIRT ONLY with collar.(Long or short sleeve) **No Polo Style Shirt**
- Blazers for special occasions

Spirit Shirts

- May purchase tonight at the table
- Meet the Teacher night
- On-line
- Every Wednesday morning



My School Bucks

- <https://www.myschoolbucks.com/ver2/help/gethelpvideos>

**My School Bucks will be available to take payments starting
Wednesday August 17th**

Annual Fee (K-6th): \$200 (PreK): \$150

Activity Fee payments are due:

- 9/23
- 10/28
- 1/27



Lunch

- No application needed: Free Breakfast and Lunch for SY 22-23.
- Please indicate if your child has an allergy on the parent information sheet.



Nut-Free Facility



Campus/Behavior Expectations

Scholar Discipline

Level 1: examples but not limited to

- Minor behavior infractions
- classroom disruptions
- Disruptive or noncompliant behavior on a school bus

Level 2: examples but not limited to

- Profanity, vulgar language, or obscene gestures
- Repeated violation of classroom or transportation rules under Level 1

Level 3: examples but not limited to

- Offenses that seriously disrupt the educational process in the classroom
- Fighting
- Persistent disruptive behavior on a school bus

Consequences consist of parent contact, loss of privileges, ISS, or OSS depending on severity of each infraction

Parent Code of Conduct

Expectations:

- Work as partners with the staff
- Treat all staff members with respect
- Dress appropriately on campus
- Correct your child's behavior
- No profanity or threats
- No physical aggression towards staff members
- No Damage to school property
- No Speeding in the school's parking lot
- No Smoking in the building
- No handguns permitted (even with a license)



Transportation

- Bus Routes
- Field Trips
- Parents are not allowed to enter the bus for any reason
- Student Bus Behavior-Listed below are examples of severe bus infractions (cussing, fighting, constant insubordination, etc.)
 - 1st Serious infraction 2 weeks off bus
 - 2nd Serious infraction 1 month of the bus
 - 3rd serious infraction removal for the semester

SAFETY IS OUR NUMBER 1 PRIORITY!!!



Field Experiences



- Learning opportunities extended beyond the classroom
- Must be paid in order to participate
- Students with behavior concerns, a parent escort will be required

Registration Issues

- If you have any outstanding paperwork please see Mrs. Rocha before you leave tonight.

Meet the Teacher

Date: August 15, 2022

Time: 5pm-7pm



Parent Teacher Crew

Join the PTC Today!!!!



Crayon Club



Follow us on Social Media



@RSPA07



@Rhodesschool



Rhodes School for Performing Arts



The Rhodes School



rsap07

Q&A

You have

Questions

We have

Answers