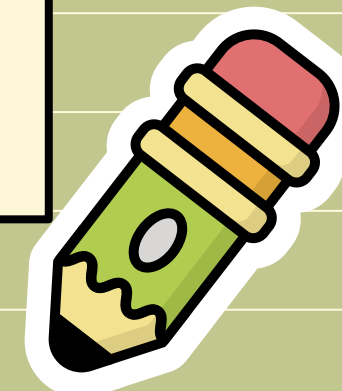
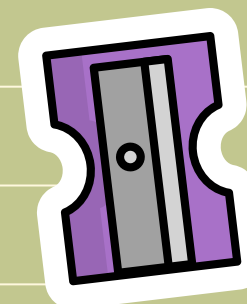
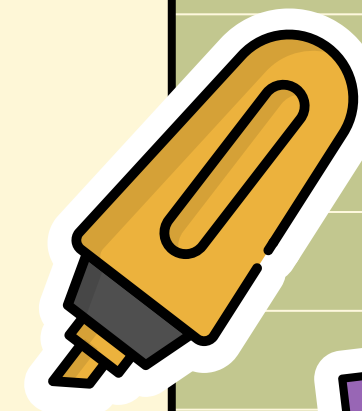
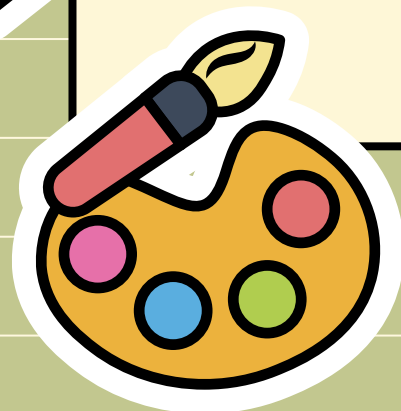
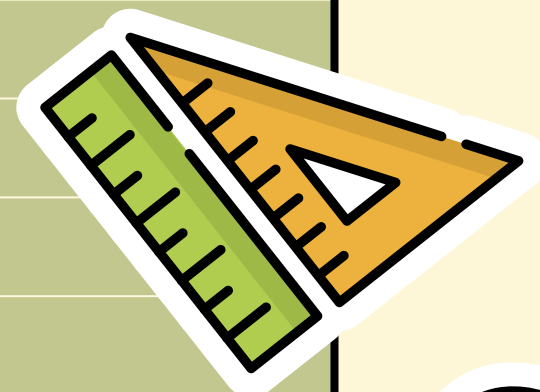
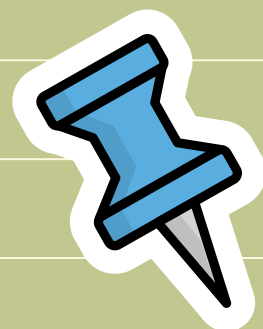


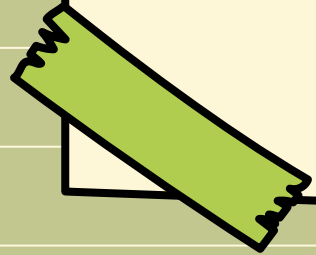
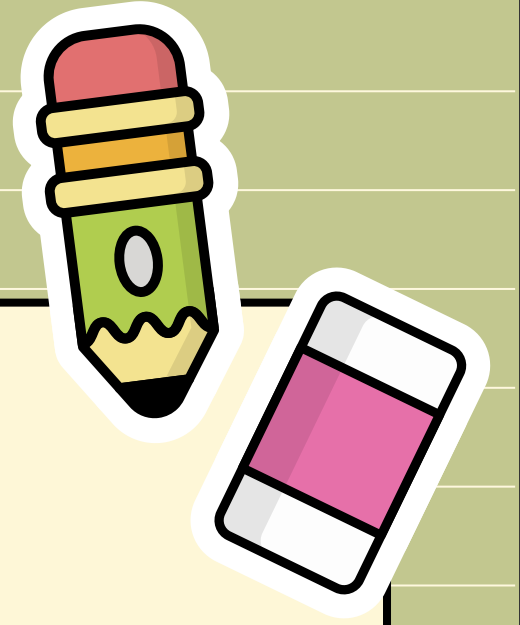
# Parent Orientation

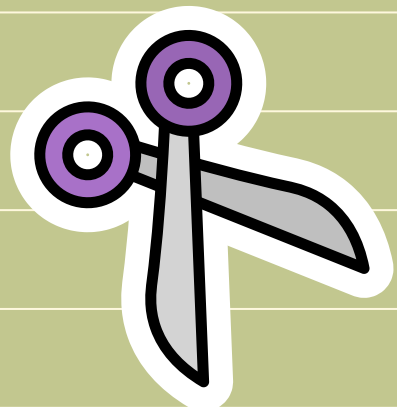
August 3, 2022



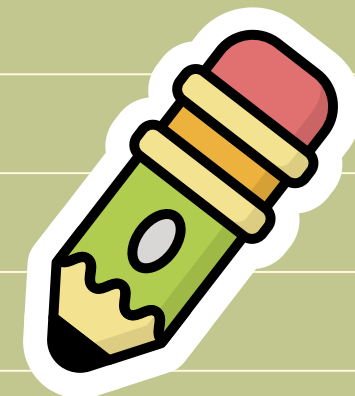
Rhodes School for the Performing Arts

# Welcome





# Introductions



Rhodes School for the Performing Arts

Humble Campus - Administration

Superintendent

Principal

Associate Principal

Counselor

Mrs. Ashley Miller



Ms. Lisa Gordon



Ms. Joycelyn Clifton



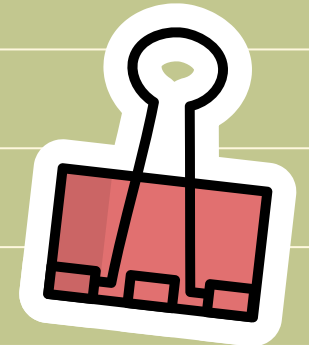
Mrs. Ludvinia Valdez  
Lopez







# Introductions



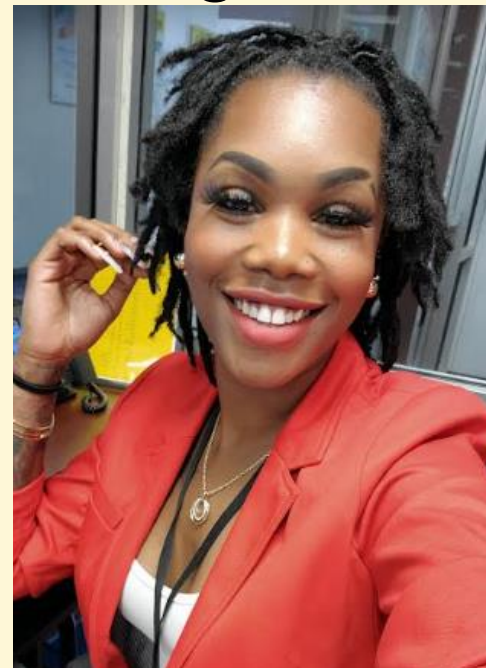
Secretary

Mrs. Chanel  
Campbell



Receptionist

Ms. LaTravia  
Sigers



Registrar

Mrs. Stacey  
Hairston



Nurse

Ms. Demetria  
Wills



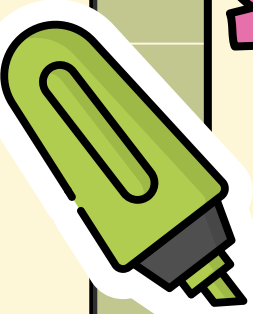
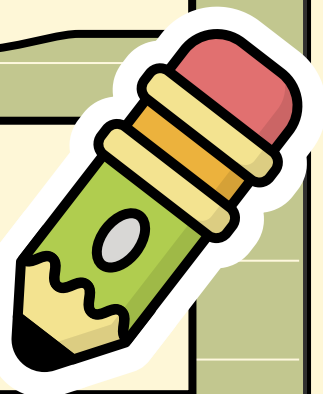
Cafeteria Mgr.

Ms. Janice  
Mendez

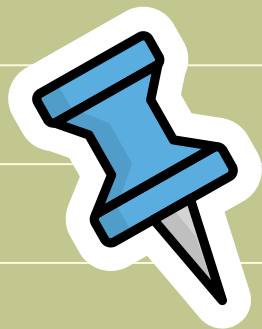


IT

[helpdesk@rhodesschool.org](mailto:helpdesk@rhodesschool.org)







# RSPA Distinguished Alumni

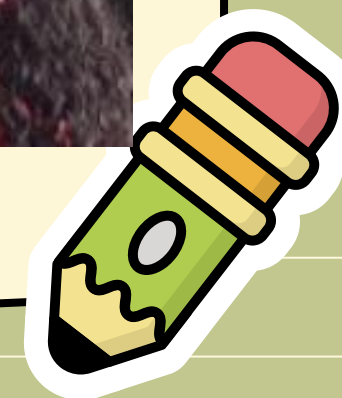
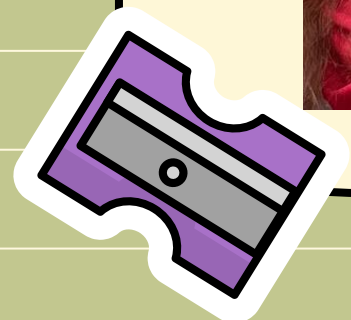
Zahyon Miller



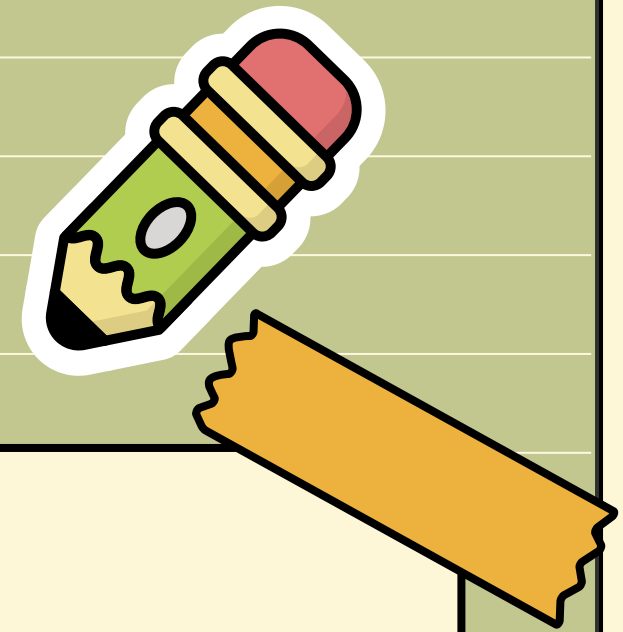
Alaysia Bradley



Anaya Simeon



# Update Information



First

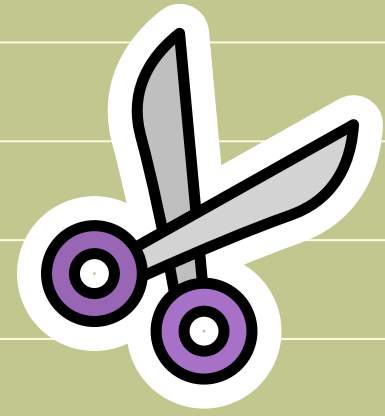
Parent/Guardian email

Next

Phone numbers

Last

Permission to pick up scholar



# About Us

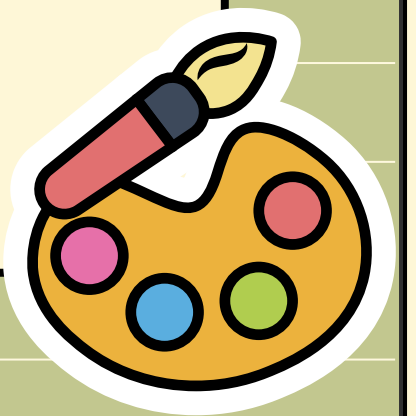


## Mission

Rhodes School for the Performing Arts is a model of educational excellence that develops students into people of integrity, who contribute to the good of society, and who are equipped to successfully compete in a global marketplace.

## Vision

To develop critical thinkers who have the character to lead.





# Title One

## We are a Title I school

The Federal Government provides financial assistance to schools with high percentages of children from low-income families to ensure that all children meet challenging state academic standards.

## Why Title I

Resources to help eligible children meet academic standards for a well rounded education

## What Title I does

- ☒ Hire Teachers
- ☒ Professional Development
- ☒ Purchase Supplies
- ☒ Educational Materials
- ☒ Free & Reduced Lunch







# Crew

## Definition

Webster defines Crew as a group of people who work together on a boat, ship, aircraft, or train.

That's what we are .....our ship is RSPA.

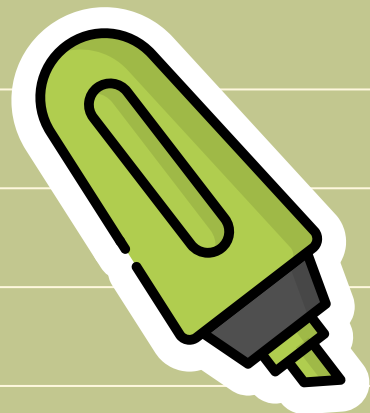
## Who is CREW

Parents, students, teachers, administrators - all working together.

Foundation  
Of  
The Rhodes  
School for the  
Performing Arts

We are **CREW**  
**NOT**  
Passengers

This ensures our scholars are the best, well-rounded critical thinkers.



# Communication

Sign up and  
stay  
informed

#1

Remind 101

Text @RSPAHHUMBLE to **81010**

#2

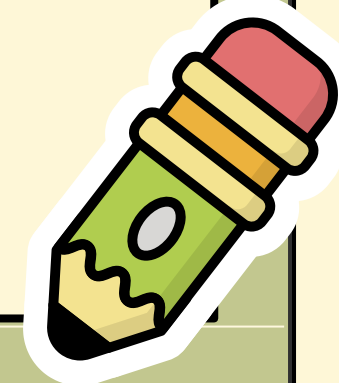
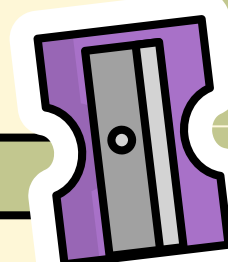
Google Classroom

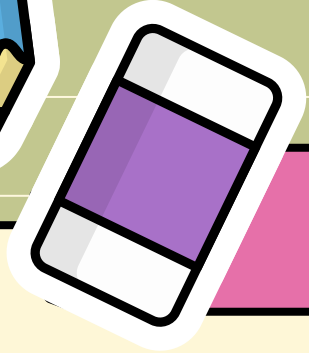
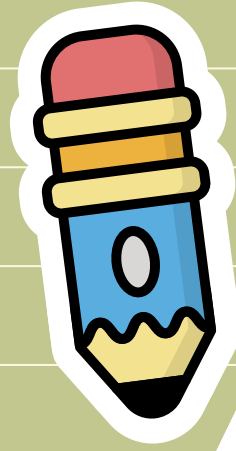
Give teacher current email address to be included

#3

\*\*\*\*Coming\*\*\*\*

GoGuardian Parent observation





# Bulletins

## Welcome

Welcome Back Bulletin  
Have been provided

## Monthly

Monthly Parent Bulletins may also be found  
on the school website under the “News &  
Events” tab, just select your campus

## Monthly

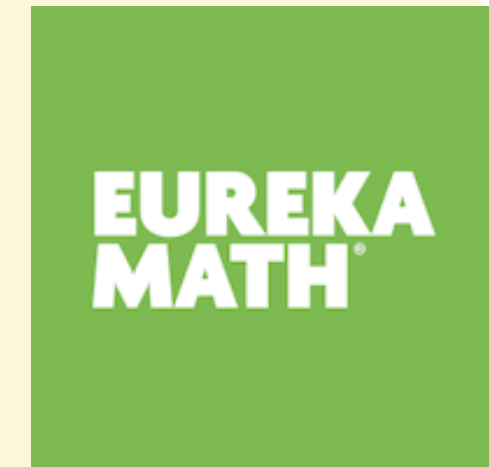
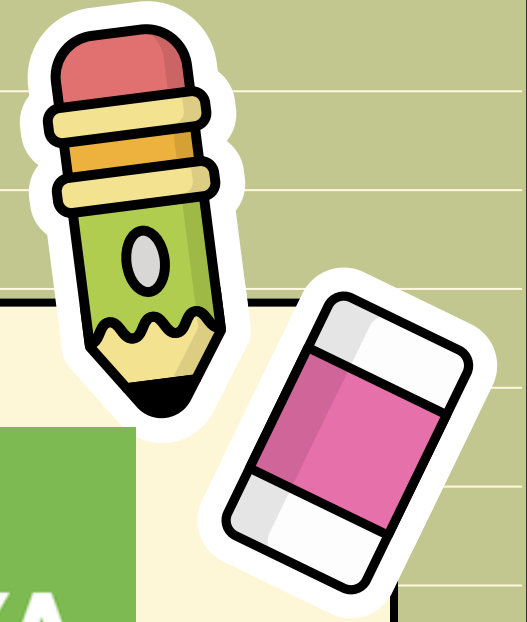
Monthly Parent Bulletins are sent via email  
through Constant Contact (*please make sure  
your email is accurate in SchoolMint*)

## Contact

Please contact Channell Campbell, Humble  
Campus Secretary, if you are not receiving  
the monthly bulletins via email



# What is my child learning?



# Curriculum



PreK

Creative Curriculum

Kinder- 5 gr

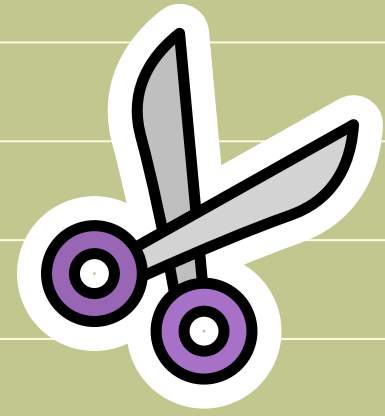
ELAR - Amplify  
Social Studies - SAVVAS

Math - Eureka Math  
Science - PhD Science

6 - 8 gr

ELAR - Amplify  
Social Studies - SAVVAS

Math- Carnegie Learning  
Science - Stemsscopes



# HB 4545



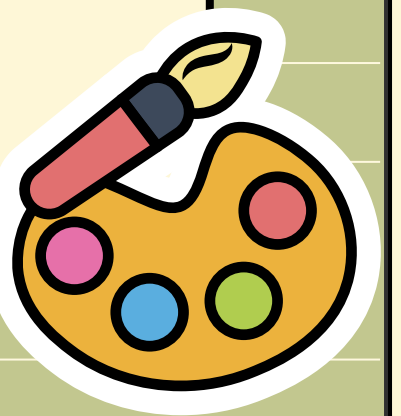
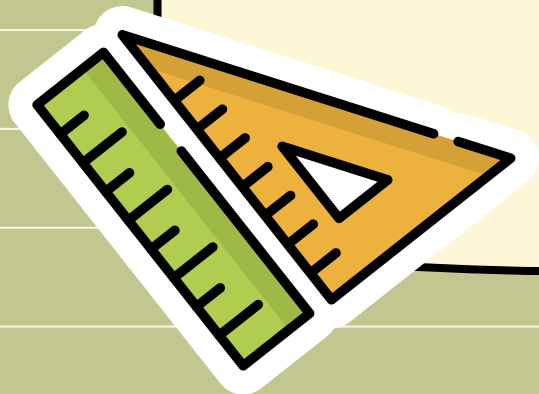
This

All students who attend a Texas, Open-enrollment charter school and meet the requirement for **accelerated instruction**, must receive it.

That

Requirements:

- Did not pass the STAAR test
- Is not on Grade Level
- RSPA has Accelerated Instruction embedded in the school day (ALT)
  - Your child will have three opportunities to pass Reading and Math STAR
  - The 3<sup>rd</sup> opportunity will be during summer school







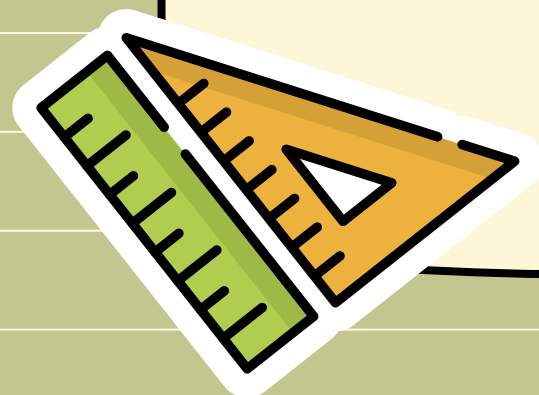
# Student Led Conferences



SLEDs- Time for your scholar to share with you what they are learning!

## How to Sign-up:

- Your child's teacher will send an invite via SignUp Genius
- October/February
- Early release days





# Special Populations

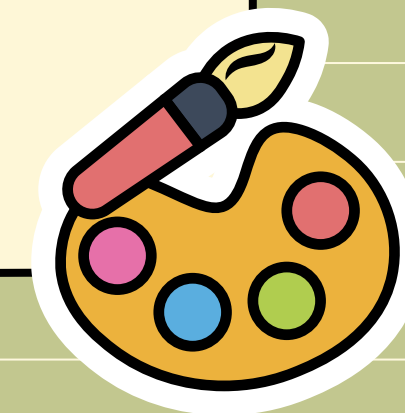
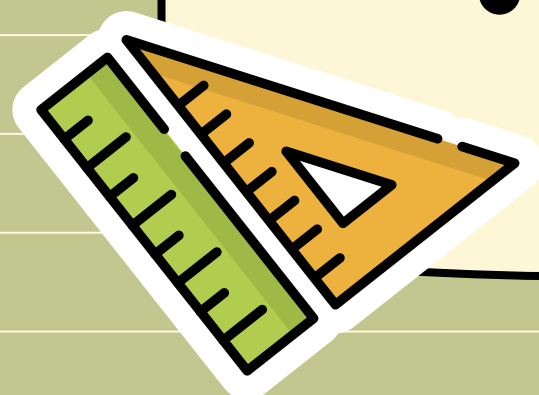


If your child has a disability and/or requires:

- an IEP
- 504 Plan
- ESL accommodations

Contact the Office of Special Education

- 281-458-4334 ext. 112
- Terrell Hutchinson,  
Director of Student Services



# Attendance – 98 is GREAT!

## evidence #1

There is a clear link between attendance and student academic performance.

## evidence #2

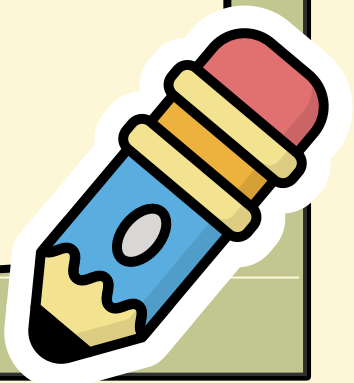
It is essential that children come to school every day and on time so they can make the best possible progress in their learning. High Attendance is our priority.

## evidence #3

Our target goal for daily attendance is 98%

conclusion

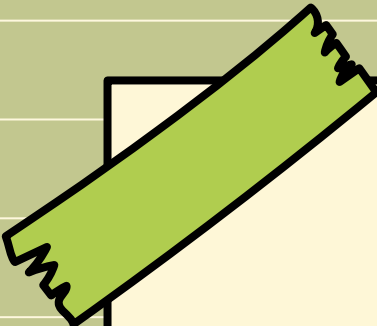
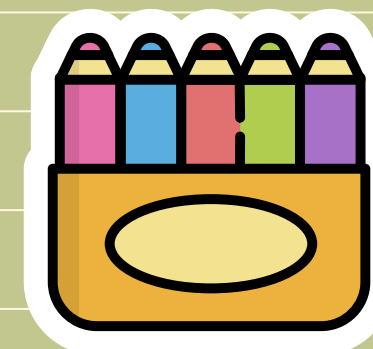
98%



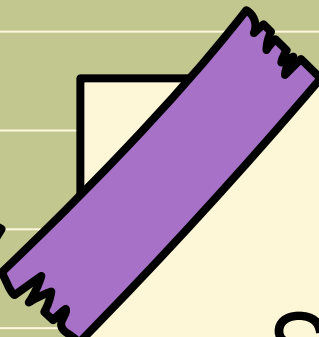
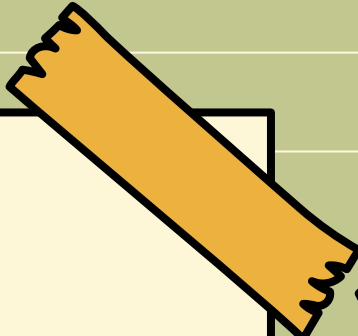
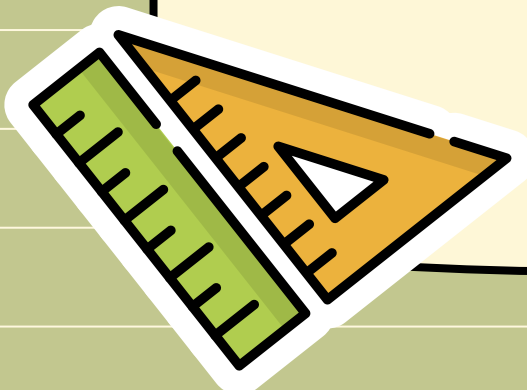





# Student Attendance

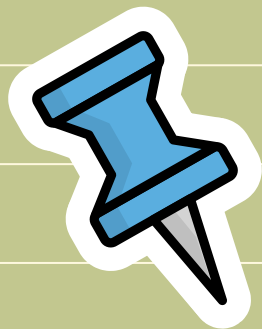


Students can not have more than 18 absences for the school year in accordance with the Texas Compulsory Attendance Law.



Students with more than 18 absences (this includes tardies) will automatically have to attend summer school and they can't miss a day. This is called "seat time" to make up for the missed days during the school year.





# Late Arrivals



What to know

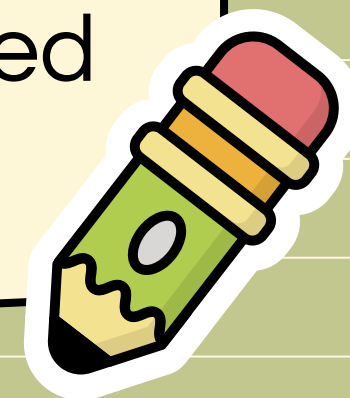
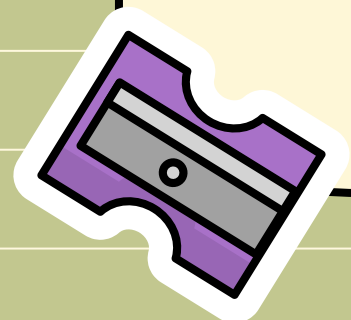
Students are  
late  
after 7:50  
A.M.

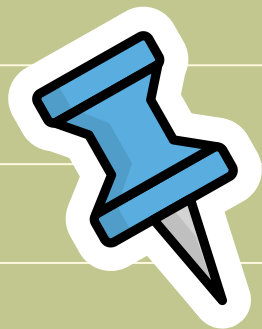
What happens

3 tardies  
=  
1 absence

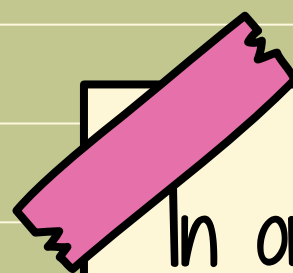
Leave early

If a student is  
checked out of  
school BEFORE 9:45  
A.M. or arrives  
AFTER 9:45 A.M.,  
they are counted  
**ABSENT.**





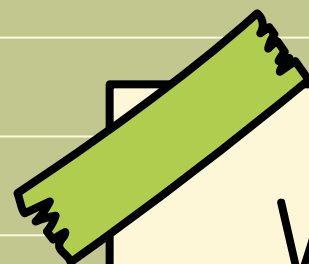
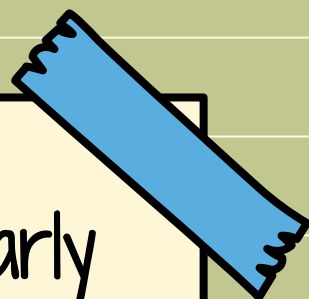
# Early Pick-Up



In order to pick up early

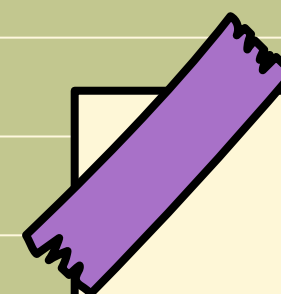
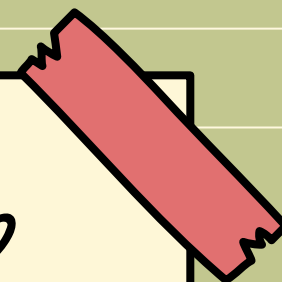
**Must have a  
valid ID**

(ex: driver's license,  
Texas state ID card,  
passport)



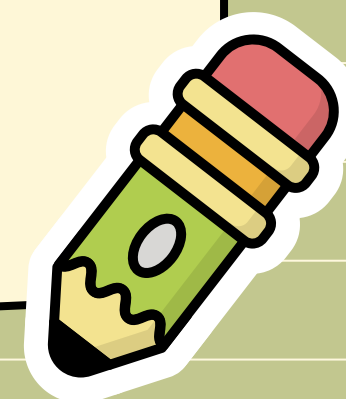
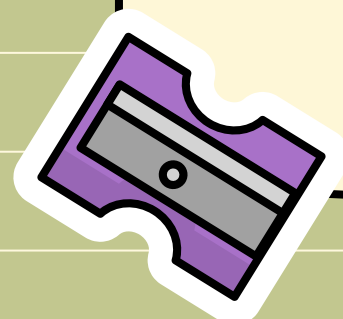
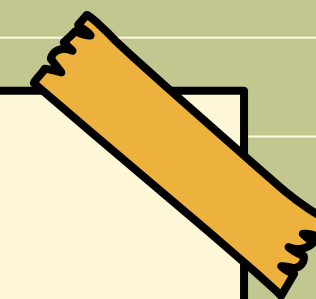
Who can pick up

**Must be listed on  
the "Pick-up" list  
in district Student  
Information  
System**



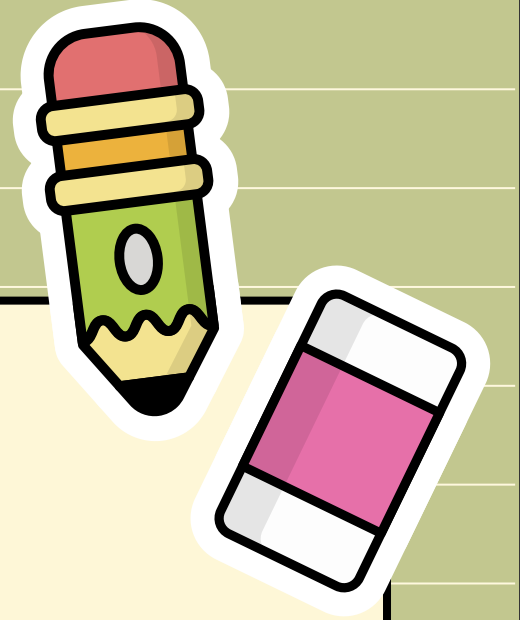
Cut-off time

**No student will be  
permitted to  
leave after 2:40  
P.M. until  
dismissal.**

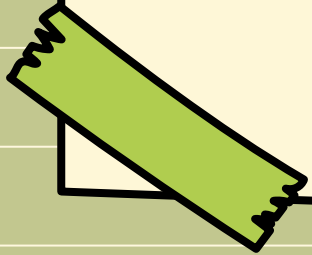


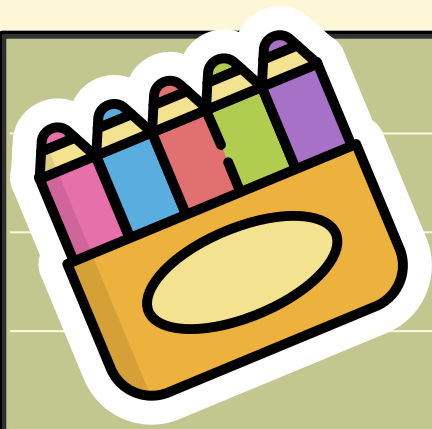


# 1st day of school arrivals

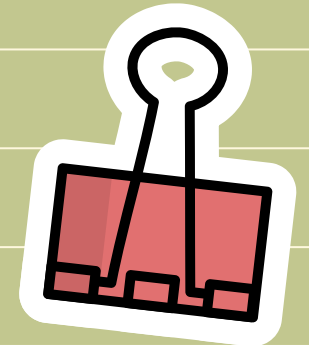


You will receive a more  
detailed one-pager on  
August 15, 2022, at  
Meet the Teacher!





Start following routines and procedures from day 1.



### Arrival

Doors open at 7:15 A.M. (If parents drop off earlier, child will be taken to *Crayon Club* and assessed a \$25.00 fee.)

### Drop off

Student drop off is at the front of the building.

### Say goodbyes

Hugs and kisses are encouraged at the front door. (Not in the building.)

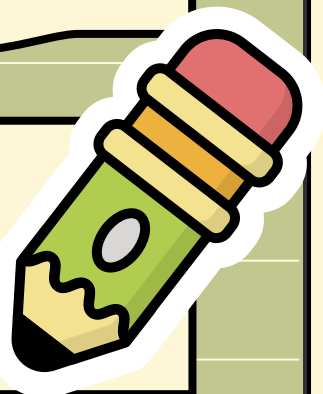
### Car Tags

Car Tags will be issued to each car rider student. Please display it upon pick-up.

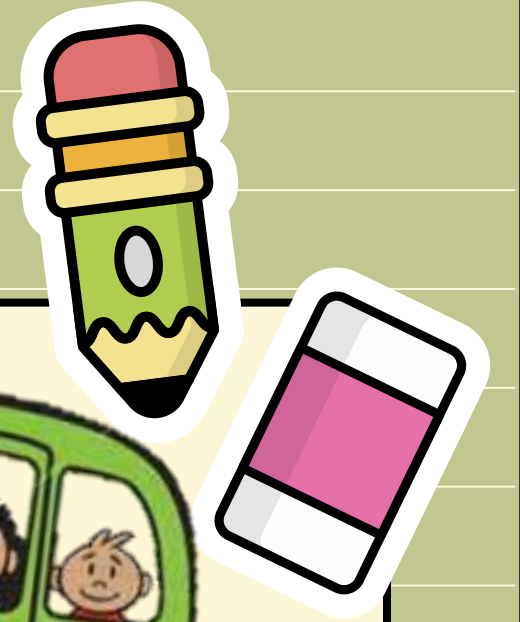
### Doors locked

At 7:45 A.M. all doors will be locked and parents must walk students into front office to sign in.

Learn the routines and procedures

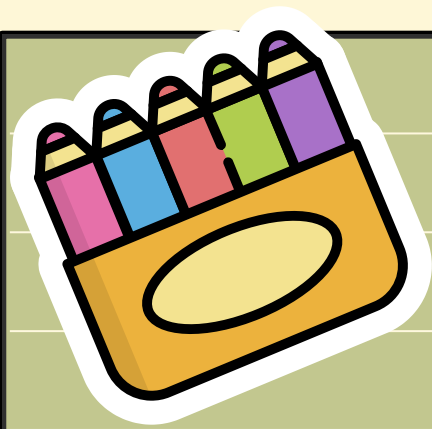


# 1st day dismissal

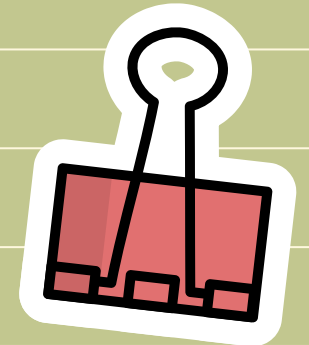


**Please pack your patience!  
We must ensure that  
everyone makes it home  
safe and sound.**





Start following routines and procedures from day 1



### Dismissal

No student  
will be  
released  
between  
2:50 and  
3:45 P.M.

### Time

School  
Dismissal is  
3:45 P.M.

### No Car Tags

- Park your car
- Come to front office and sign student out
  - Show ID
  - On Pick-Up List

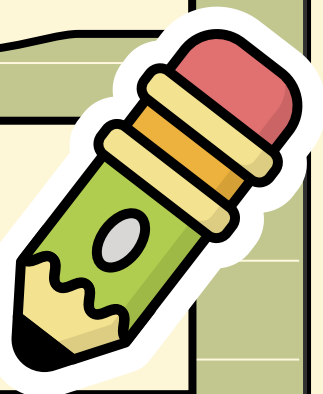
### 30 minutes late

Students will  
be taken to  
Crayon Club if  
Parent more  
than 30  
minutes late.

### Crayon Club

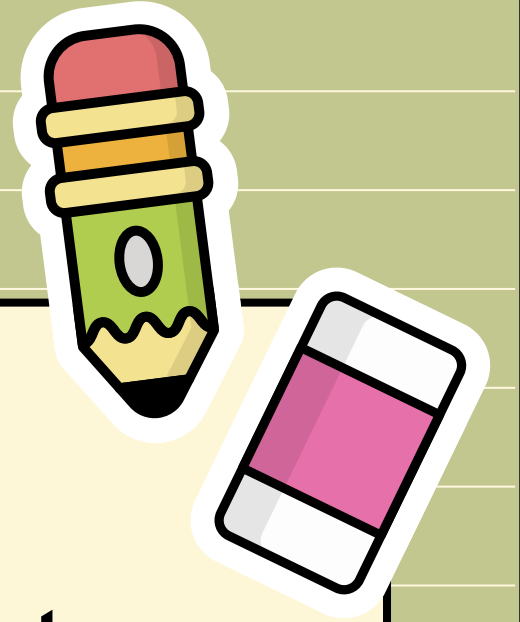
Crayon Club  
fee is  
\$25.00

Learn the routines and procedures





# Uniforms



Visit the link on our school website under district resources:

<https://rhodesschool.org/parent-resources/>



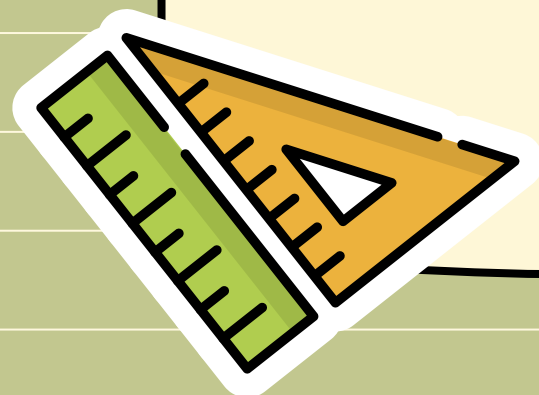


# School Spirit Shirts

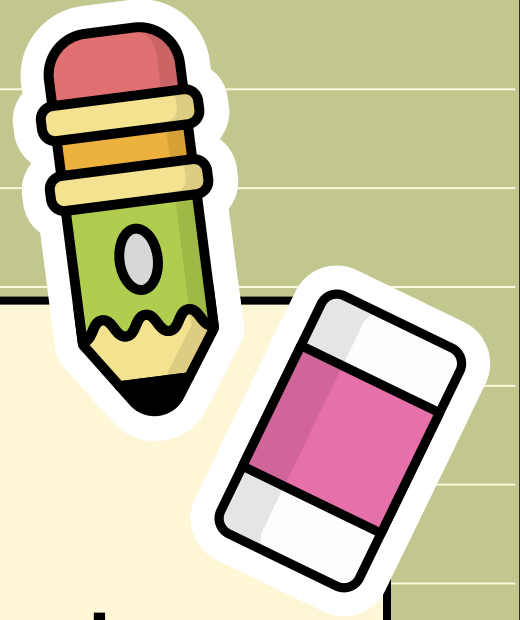


When/Where Can I purchase?

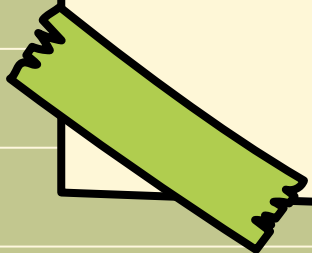
- ❖ May purchase tonight at the table
- ❖ Purchase at Meet the teacher night
- ❖ On-line (through my SchoolBucks)
- ❖ In the front office



# School Meals

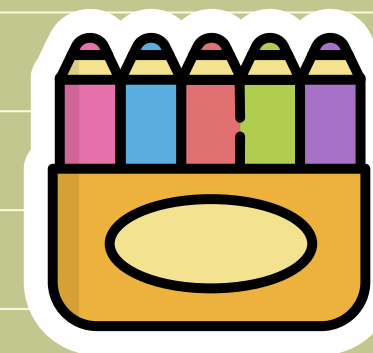


- No application needed: Free Breakfast and Lunch
- Please indicate if your child has an allergy on the Parent Information Sheet
- Cannot accommodate parent requests without doctor signed form





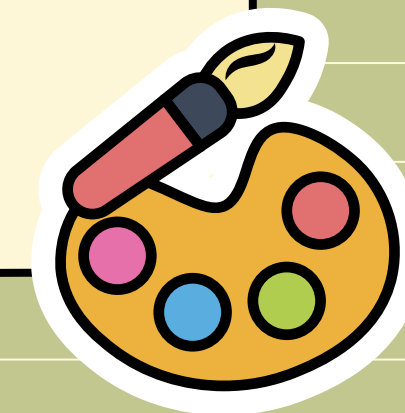
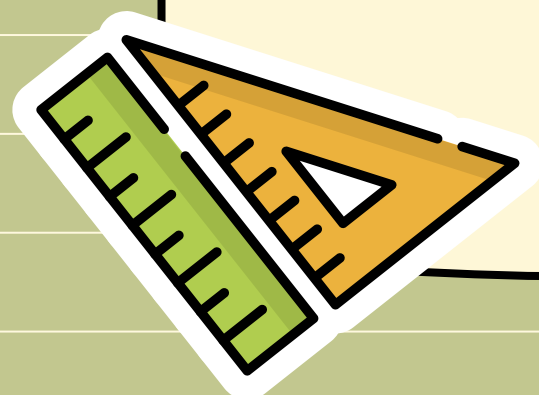
# Nut-free Facility



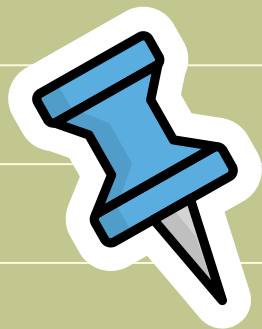
Nuts and shellfish  
are NOT allowed on  
campus



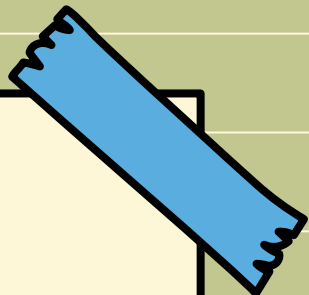
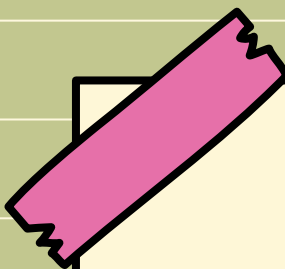
No peanut butter and  
jelly sandwiches are  
allowed








# My School Bucks




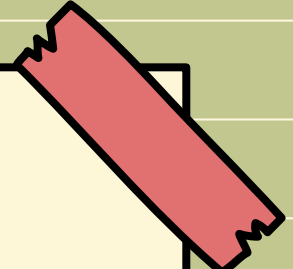
An online payment service that allows you to pay for your Child's Field Experiences for the year.



Annual fee:

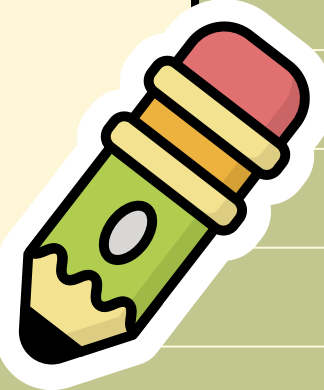

PreK:  
\$150

Gr K-8:  
\$200

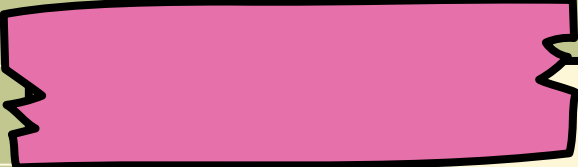
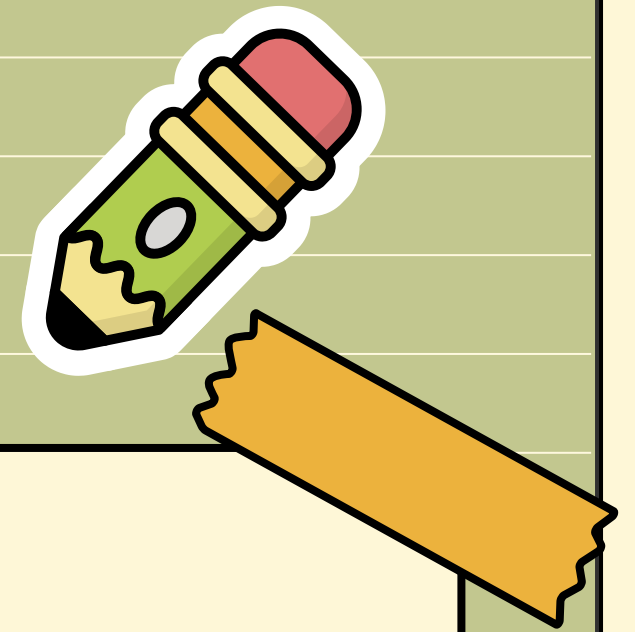


Activity fee payment due dates:

9/30/22  
10/28/22  
1/27/23




# Field Experiences



Learning opportunities extended  
beyond the classroom



Must be paid in order to participate



Students with behavior concerns, a  
parent escort will be required



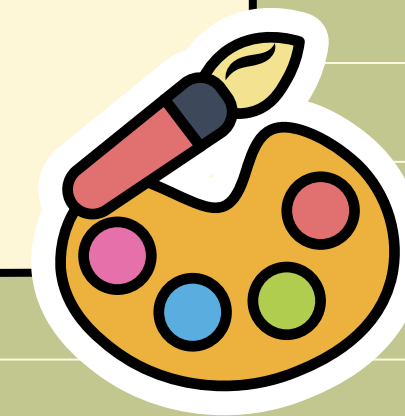
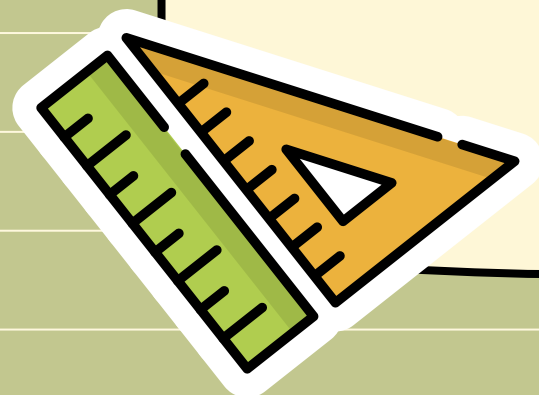
# Parent Portal



New parents only - Request access to the portal by clicking the link below:


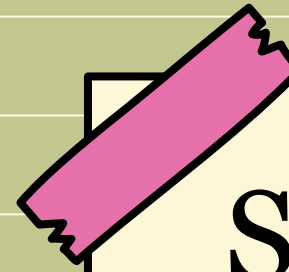
[Parent Portal Access Request Form](#)

Once your account is activated, you will receive an email with instructions.

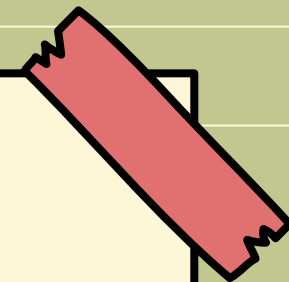
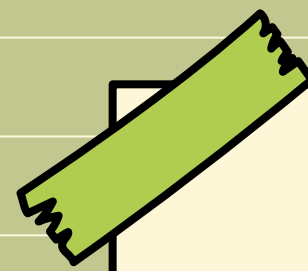





# Grading



Students will receive a minimum of 2 grades a week from each subject area.



If you have any questions or concerns regarding your scholar's grade please contact their teacher FIRST and then if you still have questions or concerns, contact Administration.



Students will receive a progress reports at 3 weeks and a report card every 9 weeks.





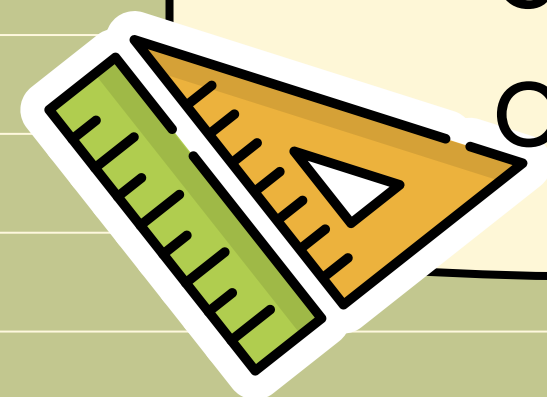


# Student Planners

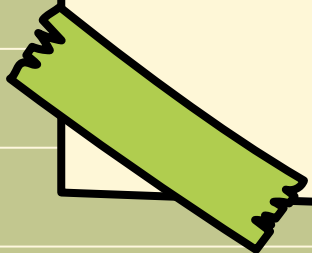
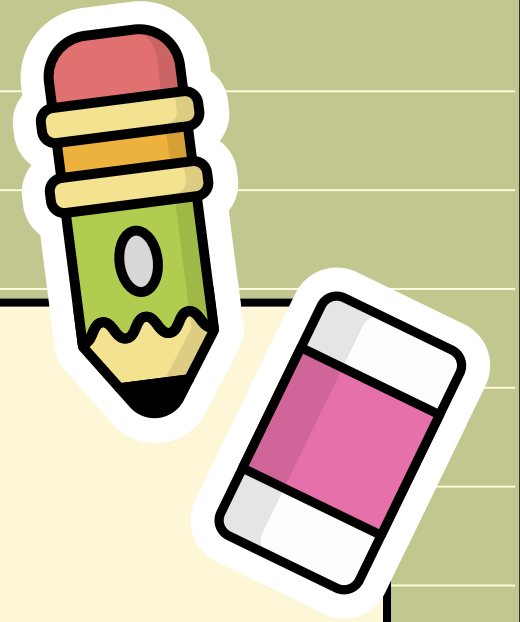


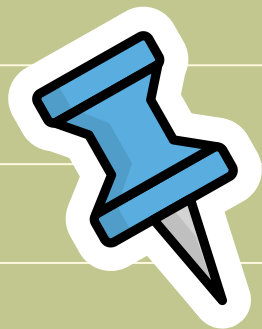
➤ Student Planners are required for students in Grades 3 - 8.

➤ Student planners are \$5 and will be on sale tonight.



# Campus Behavior Expectations





# Student Handbook



## Attendance

Students must be present no later than 9:45 A.M. and remain in school at least 2 hours of the school day to be counted present

3 tardies = 1 absence

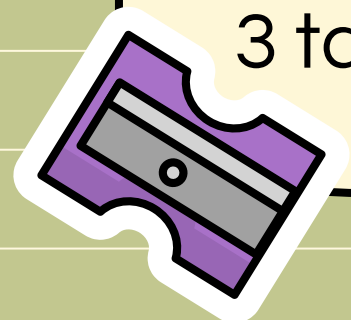
## Student Behavior

RSPA expects all students to follow policies and procedures.

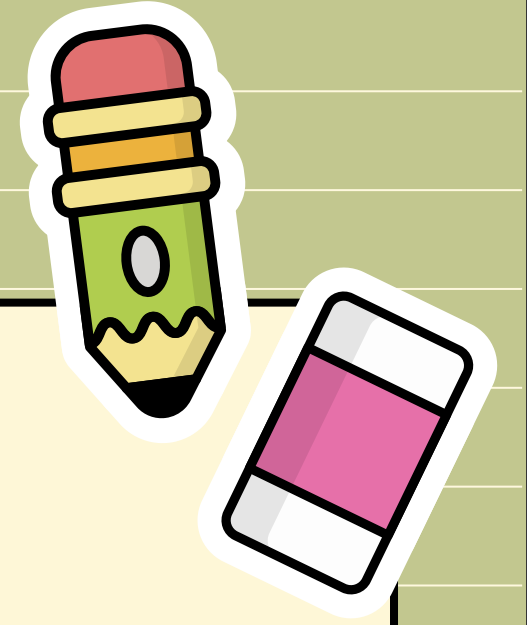
## Dress Code

Baby Blue tops and Navy bottoms **MUST** be worn everyday, with the exception of spirit shirts on Fridays.

PTC – Free Dress Days



# Scholar Discipline



Level 1: examples but not limited to

- Minor behavior infractions
- classroom disruptions
- Disruptive or noncompliant behavior on a school bus

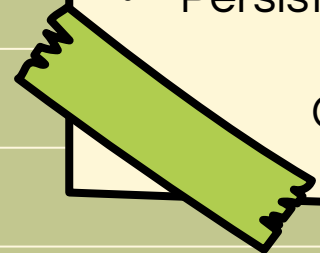
Level 2: examples but not limited to

- Profanity, vulgar language, or obscene gestures
- Repeated violation of classroom or transportation rules under Level 1

Level 3: examples but not limited to

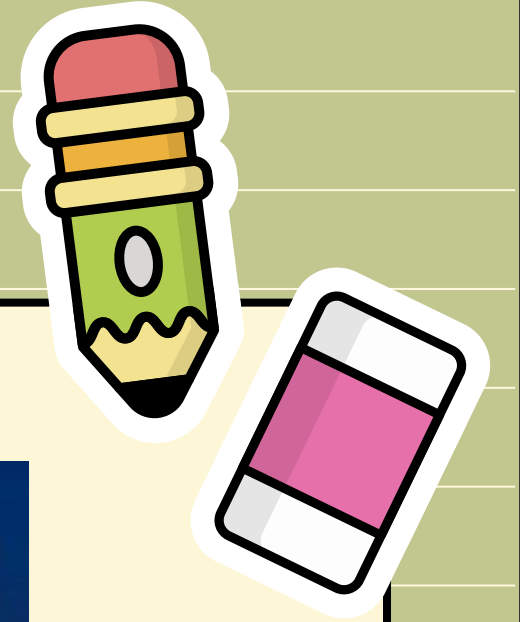
- Offenses that seriously disrupt the educational process in the classroom
- Fighting
- Persistent disruptive behavior on a school bus

Consequences consist of parent contact, loss of privileges, ISS, or OSS depending on severity of each infraction



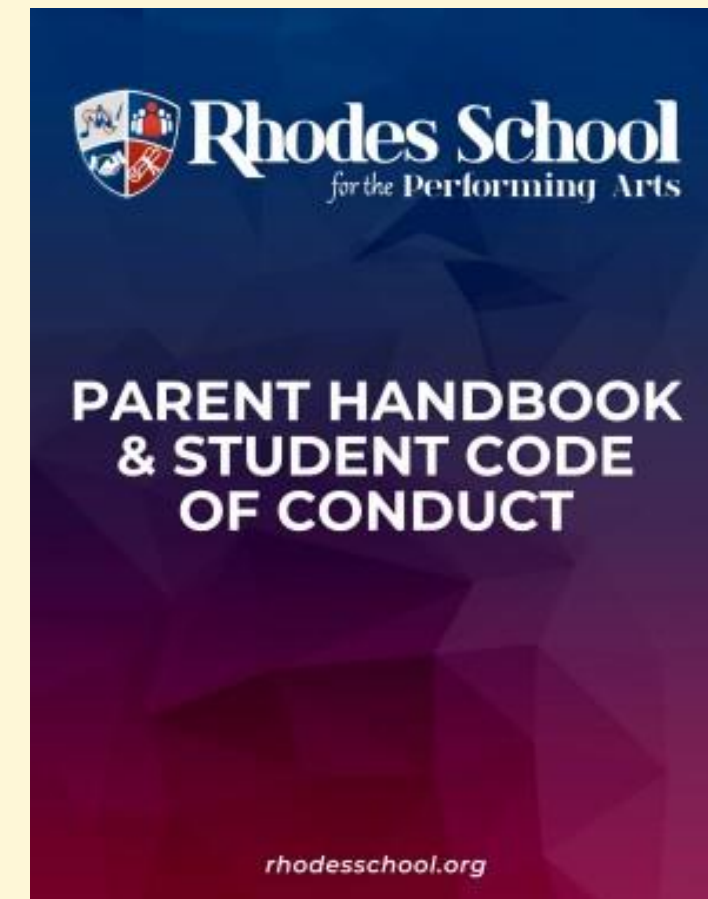


# Parent Code of Conduct



## Expectations:

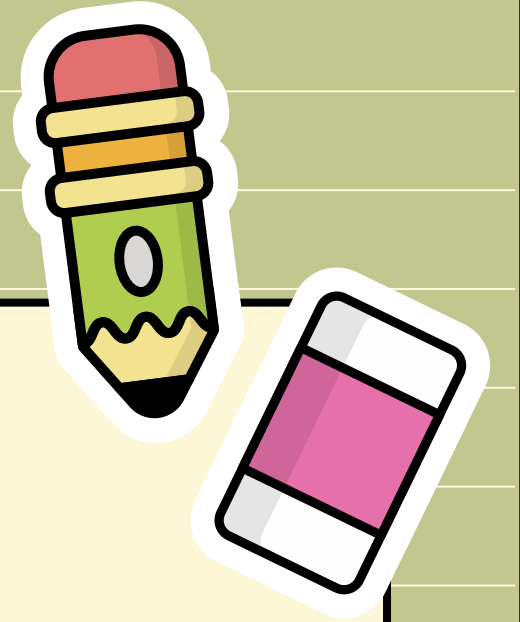
- Work as partners with the staff
- Treat all staff members with respect
- Dress appropriately
- Correct your child's behavior
- No profanity or threats
- No physical aggression towards staff members
- No Damage to school property
- No Speeding in the school's parking lot
- No Smoking in the building



**Parent Handbook &  
Student Code of Conduct**

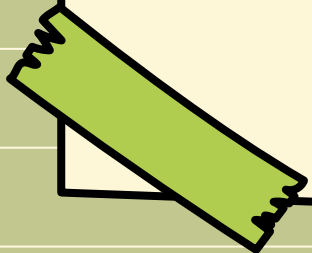


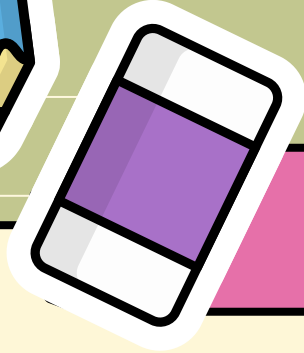
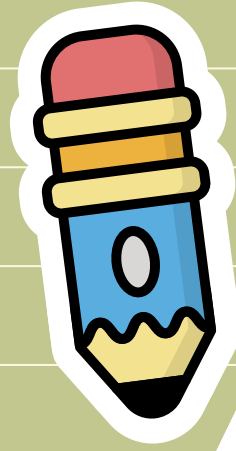
# Transportation



- Bus Routes
- Field Trips
- Parents are not allowed to enter the bus for any reason
- Student Bus Behavior-Listed below are examples of severe bus infractions (cussing, fighting, constant insubordination, etc.)
  - 1st Serious infraction 2 weeks off bus
  - 2nd Serious infraction 1 month of the bus
  - 3rd serious infraction removal for the semester

**SAFETY IS OUR NUMBER 1 PRIORITY!!!**





# Upcoming Events

## Welcome

Meet the Teacher  
August 15, 2022  
5:00 - 7:00 P.M.

## SLEDs

October & February  
More information to come

## Field Experiences

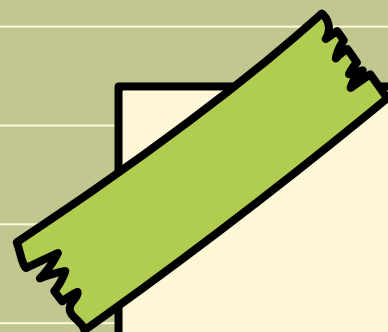
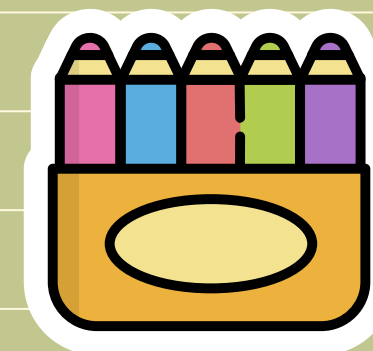
- Learning opportunities extended beyond the classroom
- Fees must be paid in order to participate
- Student must have good behavior and attendance

## Pastries with the Principal

August 30, 2022  
September date to be determined



# 2<sup>nd</sup> Annual Block Party



 **Rhodes School**  
for the Performing Arts

**SAVE THE DATE!**

2<sup>ND</sup> ANNUAL  
**BACK 2 SCHOOL**  
*Block Party*

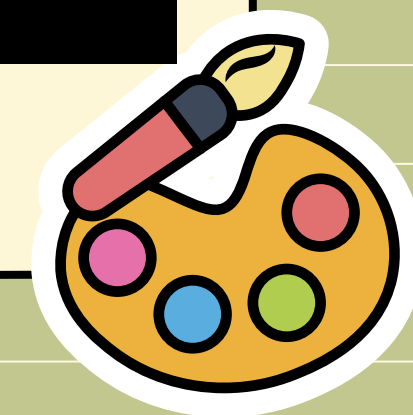
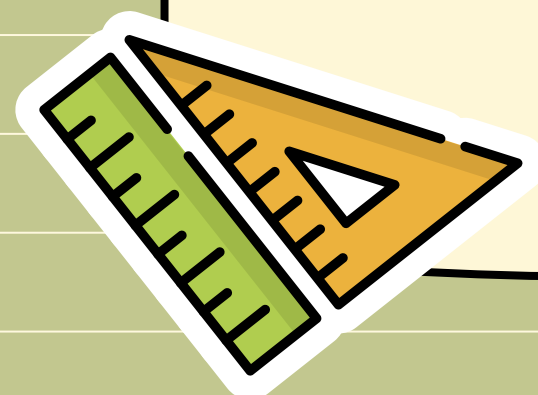
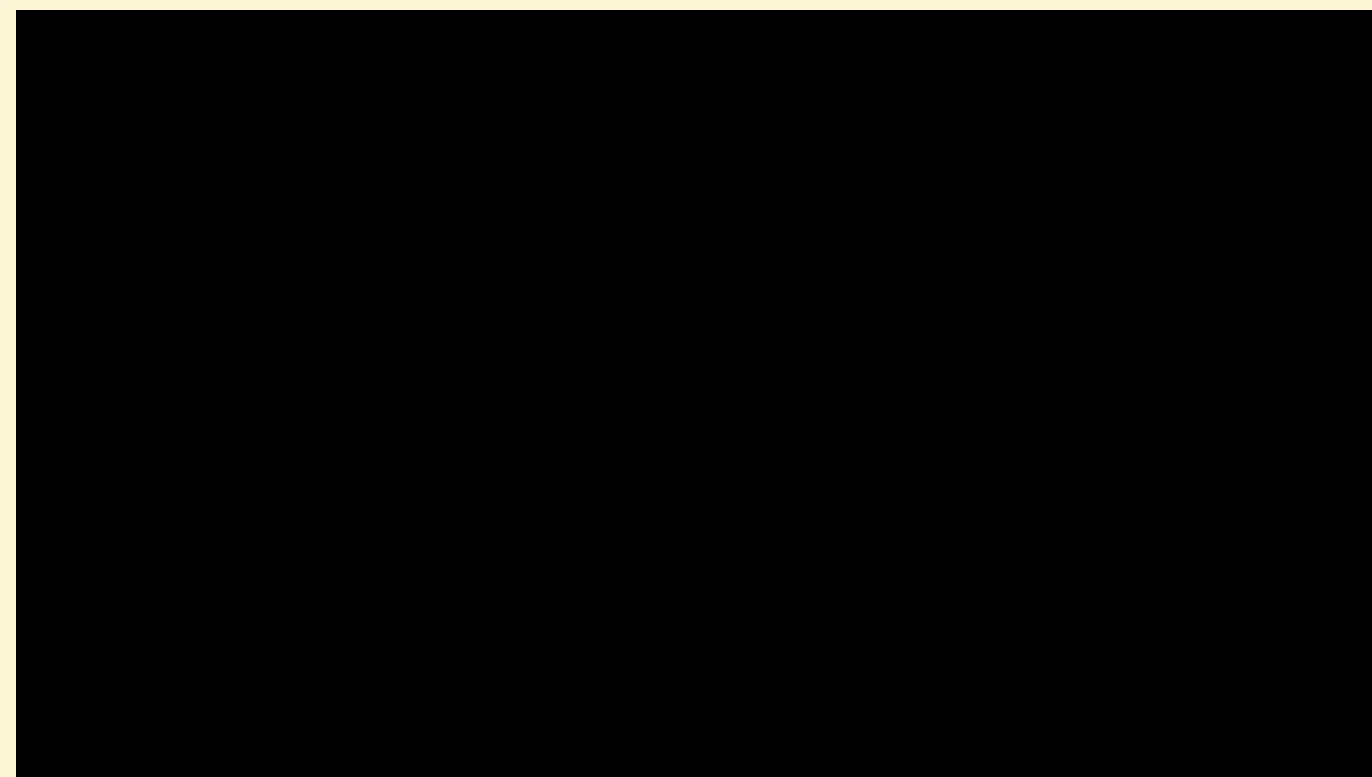
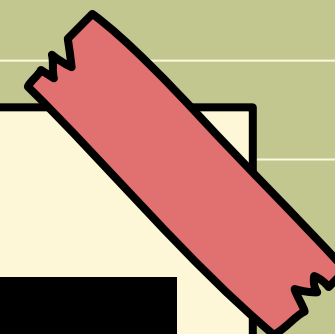
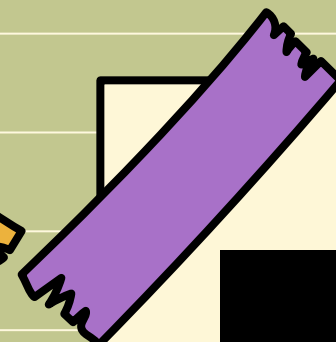
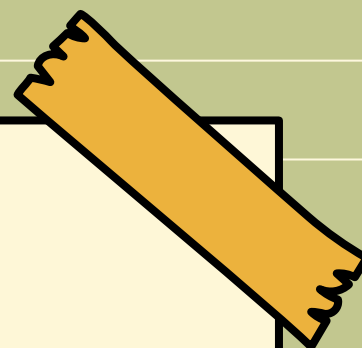
SUNDAY, AUGUST 7<sup>TH</sup> | 1:00 PM-4:00 PM  
13334 WALLISVILLE ROAD, HOUSTON, TX 77049

**VENDOR OPPORTUNITIES AVAILABLE!**

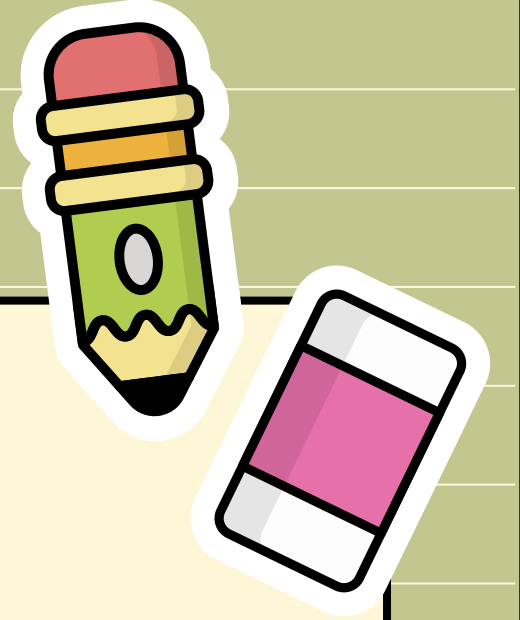
Scan the QR code to quickly register  
for vendor opportunities.  
For questions, email  
[communications@rhodesschool.org](mailto:communications@rhodesschool.org)



[www.rhodesschool.org](http://www.rhodesschool.org)



# Follow us on Social Media



**@RSPA07**



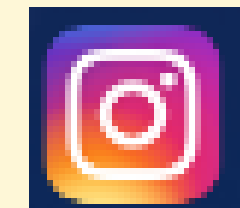
**@Rhodesschool**



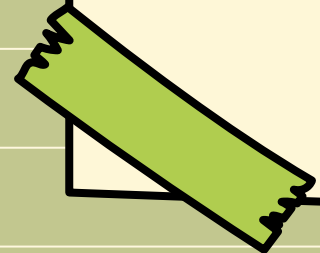
**Rhodes School for Performing Arts**



**The Rhodes School**

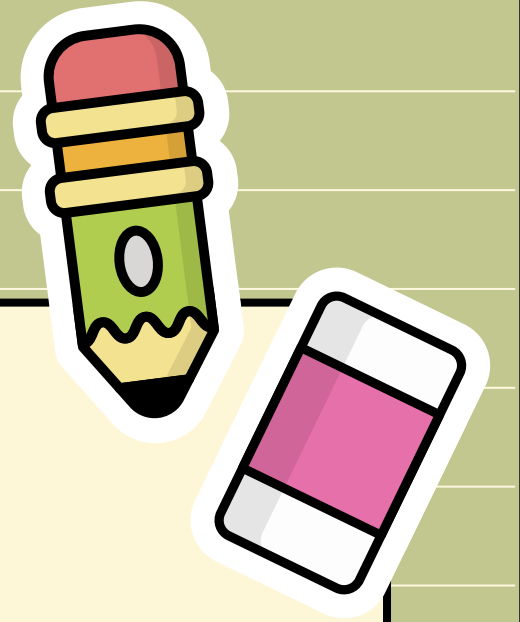


**rsap07**

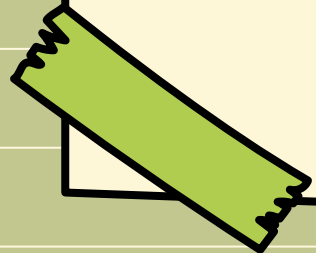




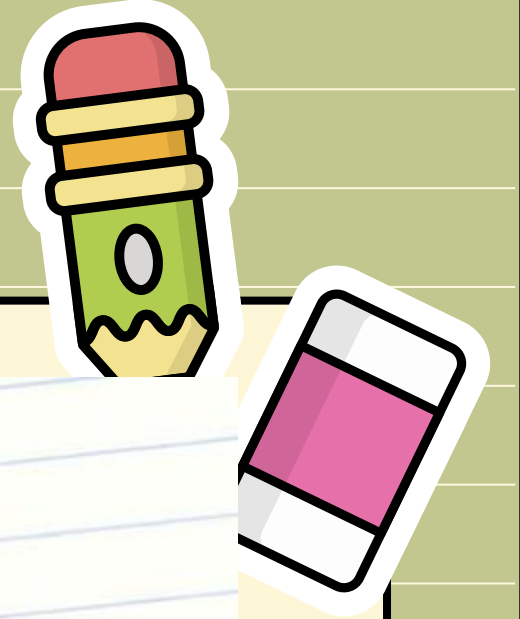
Rhodes School for the Performing Arts - Humble



THANK  
YOU!



# Questions



Q & A

You have

Questions

We have

Answers

